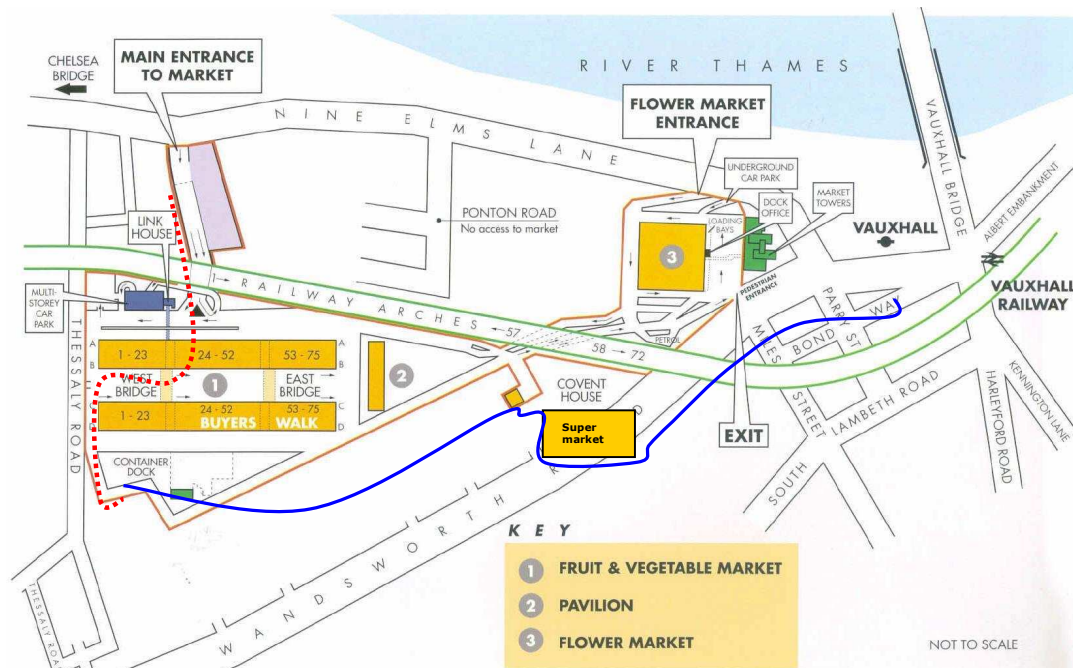


Daily Bread Visitor Instructions – New Covent Garden Market



Address: Daily Bread Ltd, D12-D17, New Covent Garden Market, Nine Elms Lane, SW8 5LL

Nearest Tube Station: Vauxhall (15min walk) ([please see the blue line on the map](#))

1. Take the right hand side exit (6) from the underground station
2. After exiting the station continue to walk straight ahead (towards market towers) until you reach the traffic lights. Cross the road and follow the pedestrian path around to the left
3. Walk along Wandsworth Road towards the railway bridge
4. Walk under the railway bridge until you reach Sainsbury's
5. Turn right as if you are visiting the store
6. Continue walking past the main entrance and the cash point machines to the back of the car park
7. Go through the bright blue gate and turn immediately left
8. Follow the road ahead until you reach the main unit buildings with a red 'D' on the side
9. Walk along the front of the unit until you reach units D12-17 (near the end of the unit)

Driving to Daily Bread: ([please see the red dotted line on the map](#))

1. When visiting the Daily Bread offices please use the main NCGM entrance on Nine Elms Lane (opposite the Esso petrol station).
2. Follow the road until you reach security (There will be a £4.00 charge before 1pm).
3. Follow the road around to the right and then carry straight on past the end of the units - unit D is the last unit on the left.
4. Turn left and drive along the front of the unit.
5. You will shortly arrive at units D12-17, The Daily Bread office.
6. Please park directly outside of the unit.